

# Encore LP 12IP



Light Efficiency:

25 Lumen/Watt

Light Quality:

CRI: 64.5

Color Temperature:

22991 K

Output: 4743 lm

Peak: 141691 cd

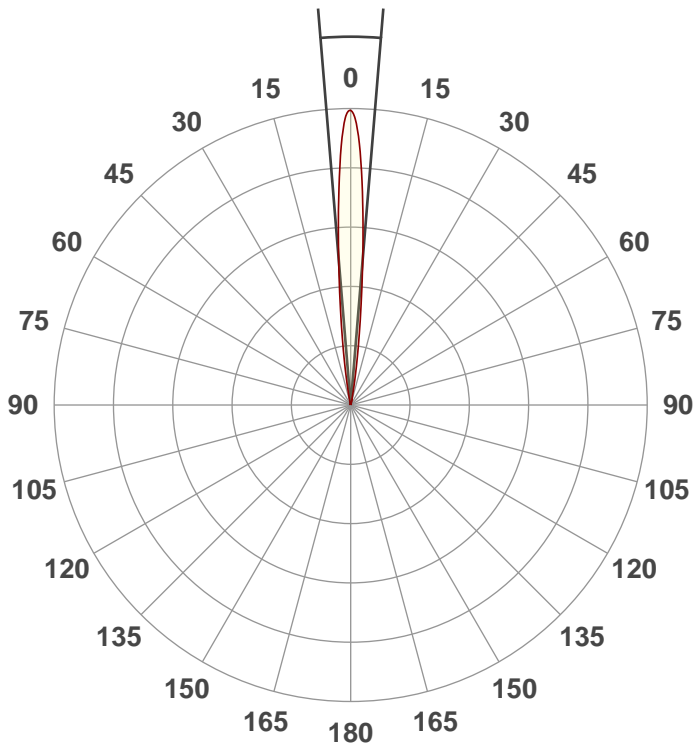
Power: 191.9 W

PF: 0.99



Beam Angle

9.4°



Test:

Full On

Date:

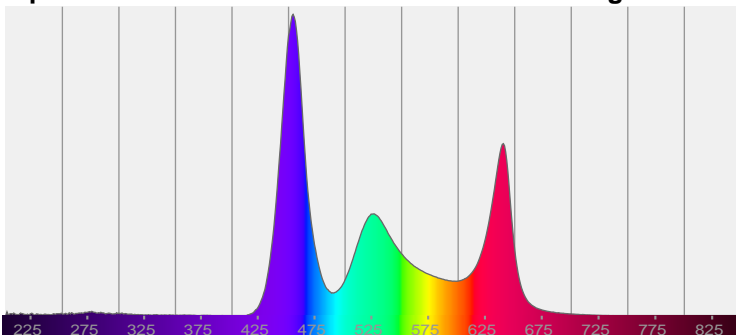
7/30/2021

Note:

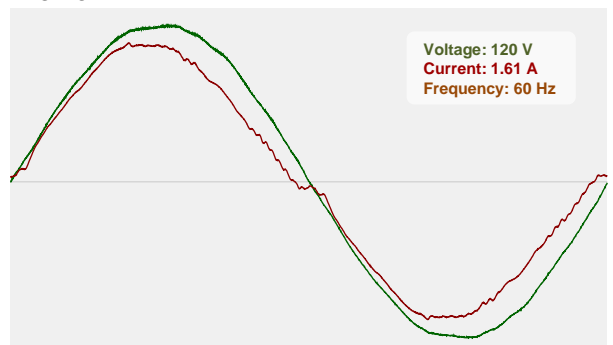
CIE 1931  
x: 0.269  
y: 0.240

Spectra

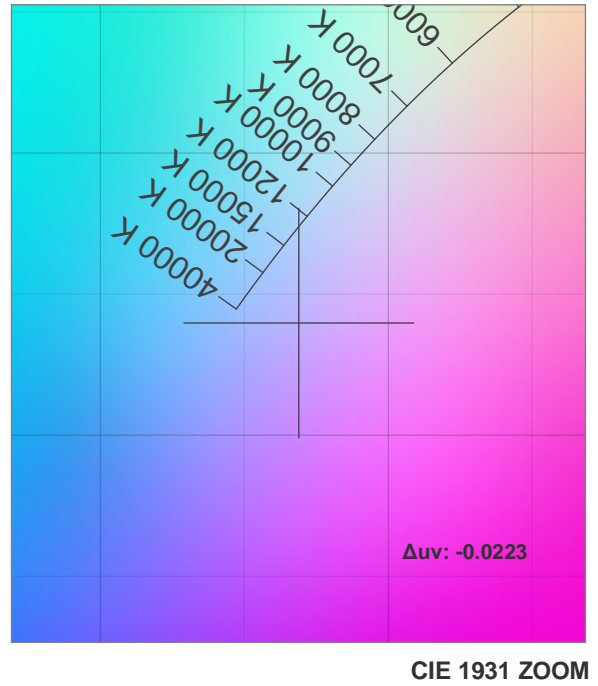
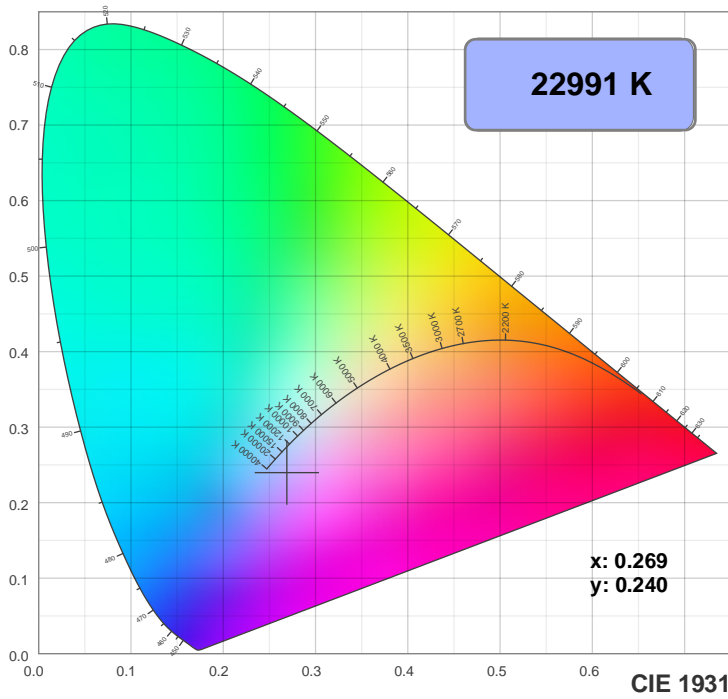
Dominant Wavelength: 448nm



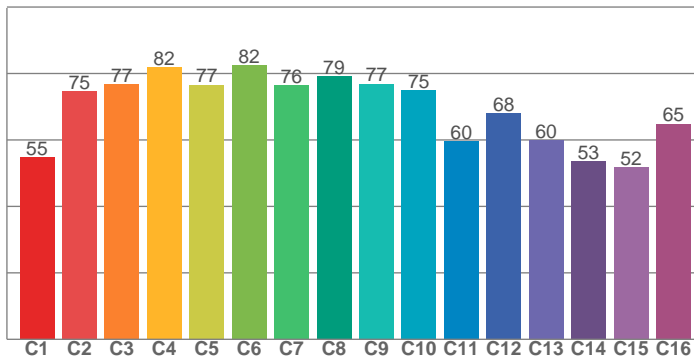
Power



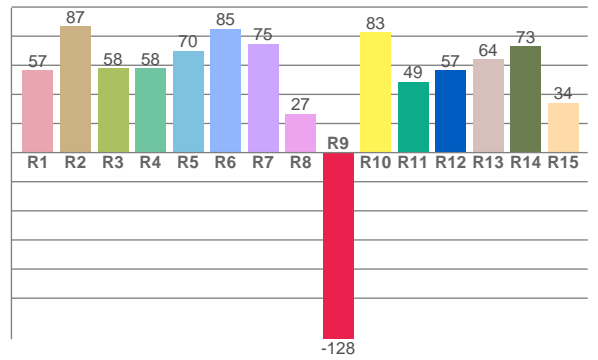
## Color Details



TM30: 71.9



CRI: 64.5 (R1-R8)



CRI R values, only R1-R8 are used to calculate final CRI value

R1	R2	R3	R4	R5	R6	R7	R8	R9	R10	R11	R12	R13	R14	R15
56.5	86.6	58.2	58.0	70.0	85.1	74.7	26.7	-128.3	82.6	48.7	56.6	64.0	73.3	34.3

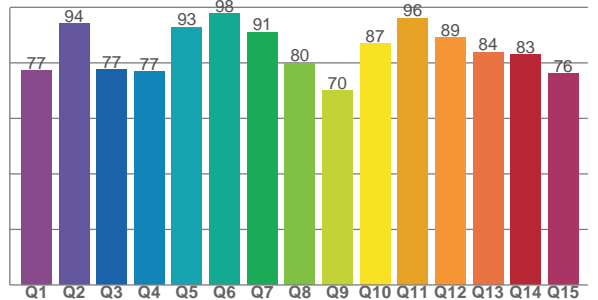
TM30 C values, 16 binned values out of total of 99 C values

C1	C2	C3	C4	C5	C6	C7	C8	C9	C10	C11	C12	C13	C14	C15	C16
54.7	74.7	76.7	81.8	76.6	82.5	76.3	79.1	76.8	75.0	59.6	68.0	59.9	53.5	51.7	64.8

CQS Q values

Q1	Q2	Q3	Q4	Q5	Q6	Q7	Q8	Q9	Q10	Q11	Q12	Q13	Q14	Q15
77.3	94.2	77.5	76.9	92.9	97.8	91.1	80.0	70.0	86.9	96.1	89.0	83.8	83.0	76.1

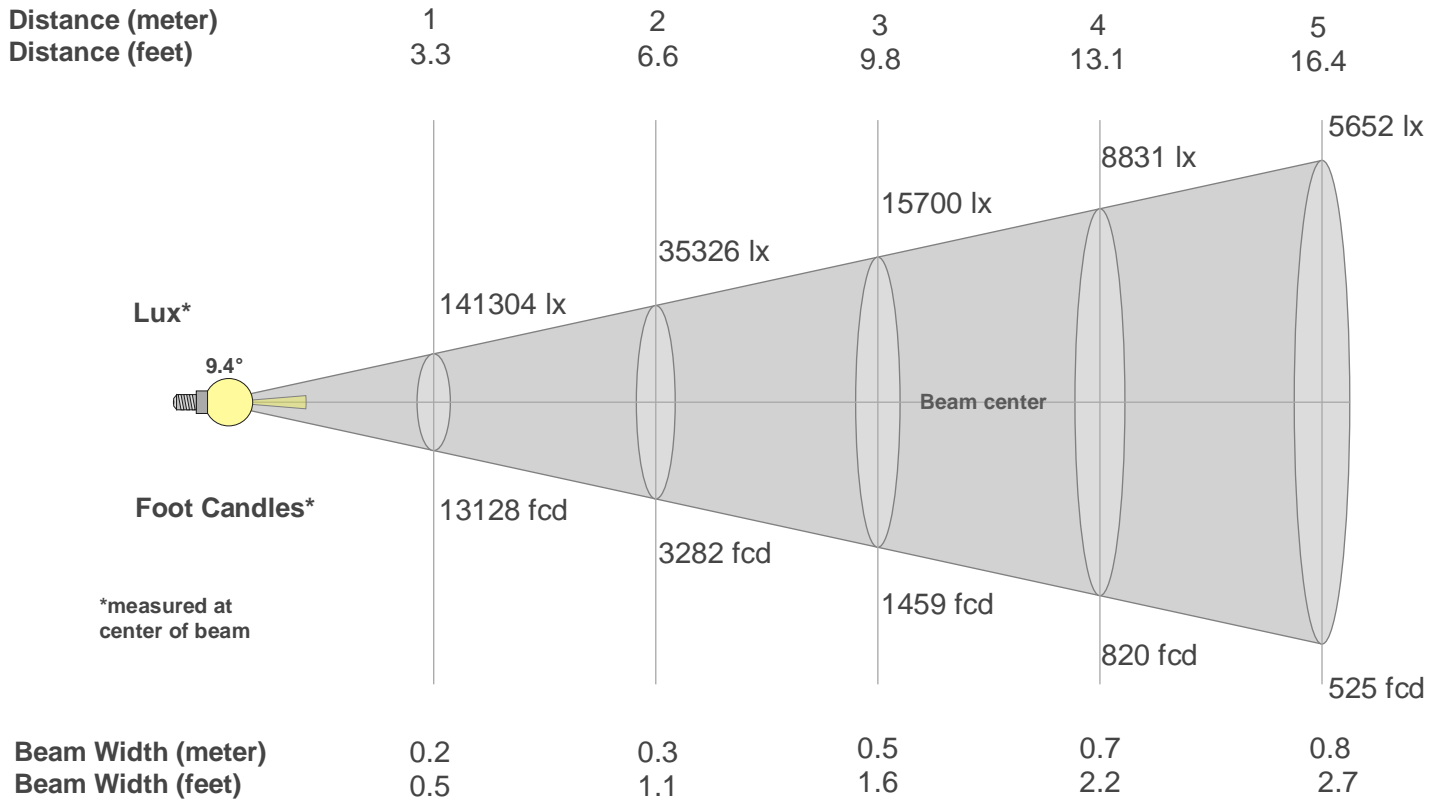
CQS: 82.8



## Color Parameters

Color Temperature	Color Rendering Index	Red Component	Color Fidelity	Color Gamut	Color Quality Scale	Color Coordinate CIE 1931	Color Coordinate CIE 1931	Color Coordinate	Color Coordinate	Color Deviation from Black Body
CCT	CRI	CRI R9	TM30 Rf	TM30 Rg	CQS	x	y	u	v	$\Delta uv$
22991 K	64.5	-128.3	71.9	116.3	82.8	0.269	0.240	0.201	0.269	-0.0223

## Beam Details



### Beam Intensities from 1-20m

m	1	2	3	4	5	6	7	8	9	10	11	12	13	14	15	16	17	18	19	20
ft	3.3	6.6	9.8	13.1	16.4	19.7	23	26.2	29.5	32.8	36.1	39.4	42.7	45.9	49.2	52.5	55.8	59.1	62.3	65.6
lx	141304	35326	15700	8831	5652	3925	2884	2208	1744	1413	1168	981	836	721	628	552	489	436	391	353
fcd	13127.6	3281.9	1458.6	820.5	525.1	364.7	267.9	205.1	162.1	131.3	108.5	91.2	77.7	67	58.3	51.3	45.4	40.5	36.4	32.8

### Intensities in 0° C-plane

0°	1°	2°	3°	4°	5°	6°	7°	8°	9°	10°	11°	12°	13°	14°	15°	16°	17°	18°	19°
141K	138K	126K	106K	85K	65K	48K	34K	23K	14K	9K	5K	3K	2K	1K	1K	1K	0K	0K	0K
100%	98%	89%	75%	60%	46%	34%	24%	16%	10%	6%	4%	2%	1%	1%	1%	0%	0%	0%	0%

### Intensities in 90° C-plane

0°	1°	2°	3°	4°	5°	6°	7°	8°	9°	10°	11°	12°	13°	14°	15°	16°	17°	18°	19°
141K	138K	126K	106K	85K	65K	48K	34K	23K	14K	9K	5K	3K	2K	1K	1K	1K	0K	0K	0K
100%	98%	89%	75%	60%	46%	34%	24%	16%	10%	6%	4%	2%	1%	1%	1%	0%	0%	0%	0%

### Intensities in 180° C-plane

0°	1°	2°	3°	4°	5°	6°	7°	8°	9°	10°	11°	12°	13°	14°	15°	16°	17°	18°	19°
141K	136K	124K	106K	85K	65K	47K	33K	22K	14K	8K	5K	3K	2K	2K	1K	0K	0K	0K	0K
100%	97%	88%	75%	60%	46%	34%	24%	16%	10%	6%	3%	2%	1%	1%	1%	0%	0%	0%	0%

### Intensities in 270° C-plane

0°	1°	2°	3°	4°	5°	6°	7°	8°	9°	10°	11°	12°	13°	14°	15°	16°	17°	18°	19°
141K	136K	124K	106K	85K	65K	47K	33K	22K	14K	8K	5K	3K	2K	2K	1K	0K	0K	0K	0K
100%	97%	88%	75%	60%	46%	34%	24%	16%	10%	6%	3%	2%	1%	1%	1%	0%	0%	0%	0%

Beam Angle 50%	Field Angle 10%	Cutoff Angle 2,5%	Intensity Ratio in 120° Cone	Intensity Ratio in 90° Cone
9.4°	18°	23.4°	100.0%	100.0%